

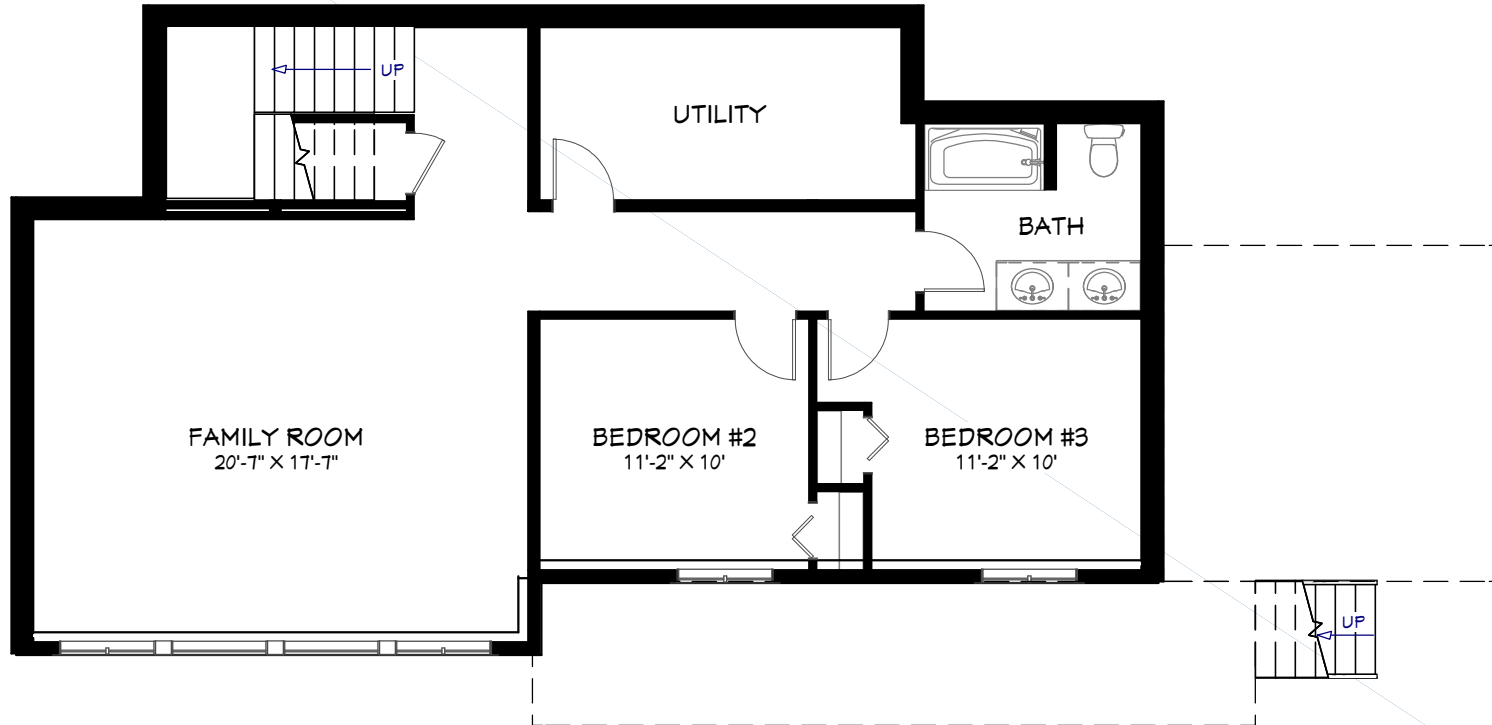
DIMENSIONS

Width: 62'
Depth: 30'

FALL 2024

SQUARE FOOTAGE

Basement: 1,005 sq.ft.
Main Floor: 1,134 sq.ft.
Upper Floor: 650 sq.ft.
Total Living Area: **2,789 sq.ft.**



BASEMENT

Visit our website for more information
www.linwoodhomes.com



Designs, Images & Plans © Linwood Homes Ltd.

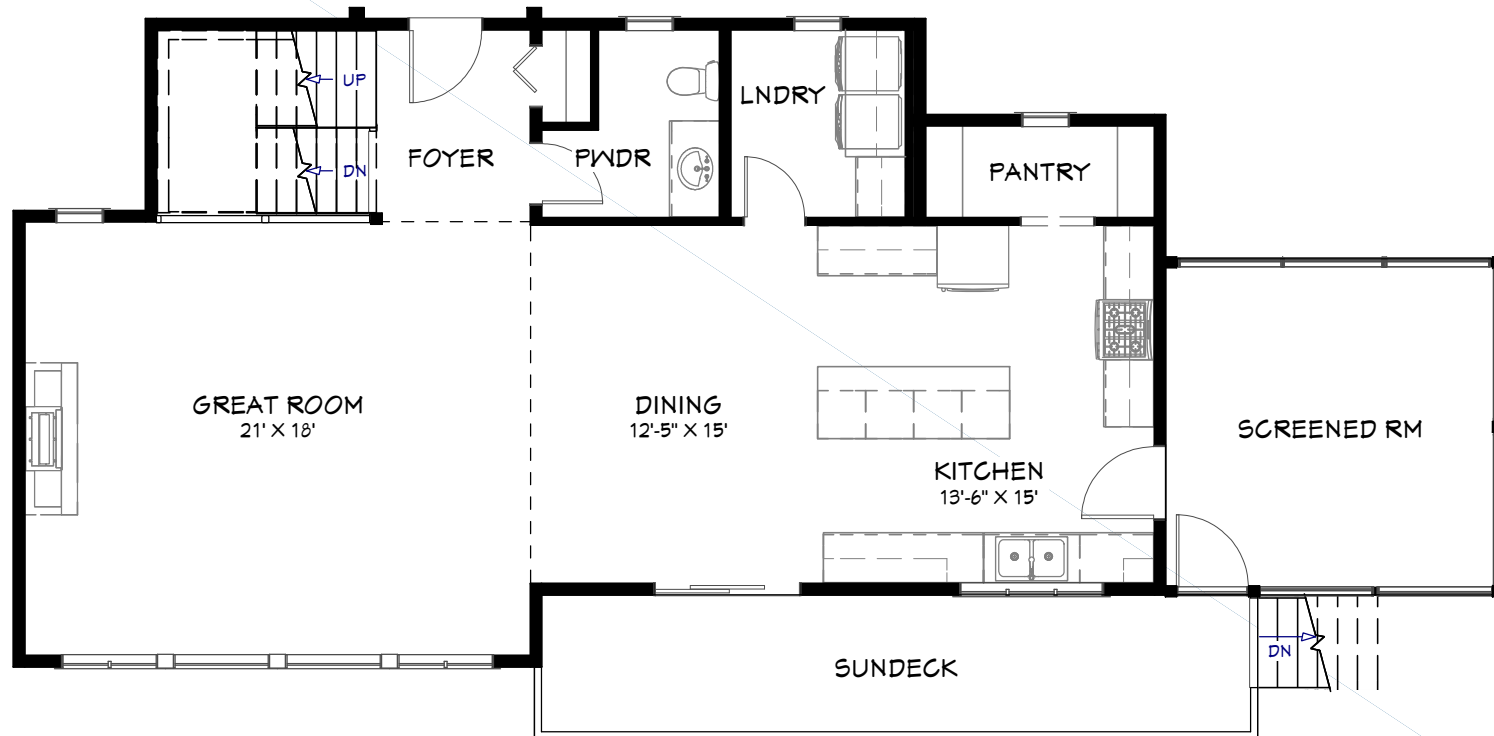
DIMENSIONS

Width: 62'
Depth: 30'

FALL 2024

SQUARE FOOTAGE

Basement: 1,005 sq.ft.
Main Floor: 1,134 sq.ft.
Upper Floor: 650 sq.ft.
Total Living Area: **2,789 sq.ft.**



MAIN FLOOR

Visit our website for more information
www.linwoodhomes.com



Designs, Images & Plans © Linwood Homes Ltd.

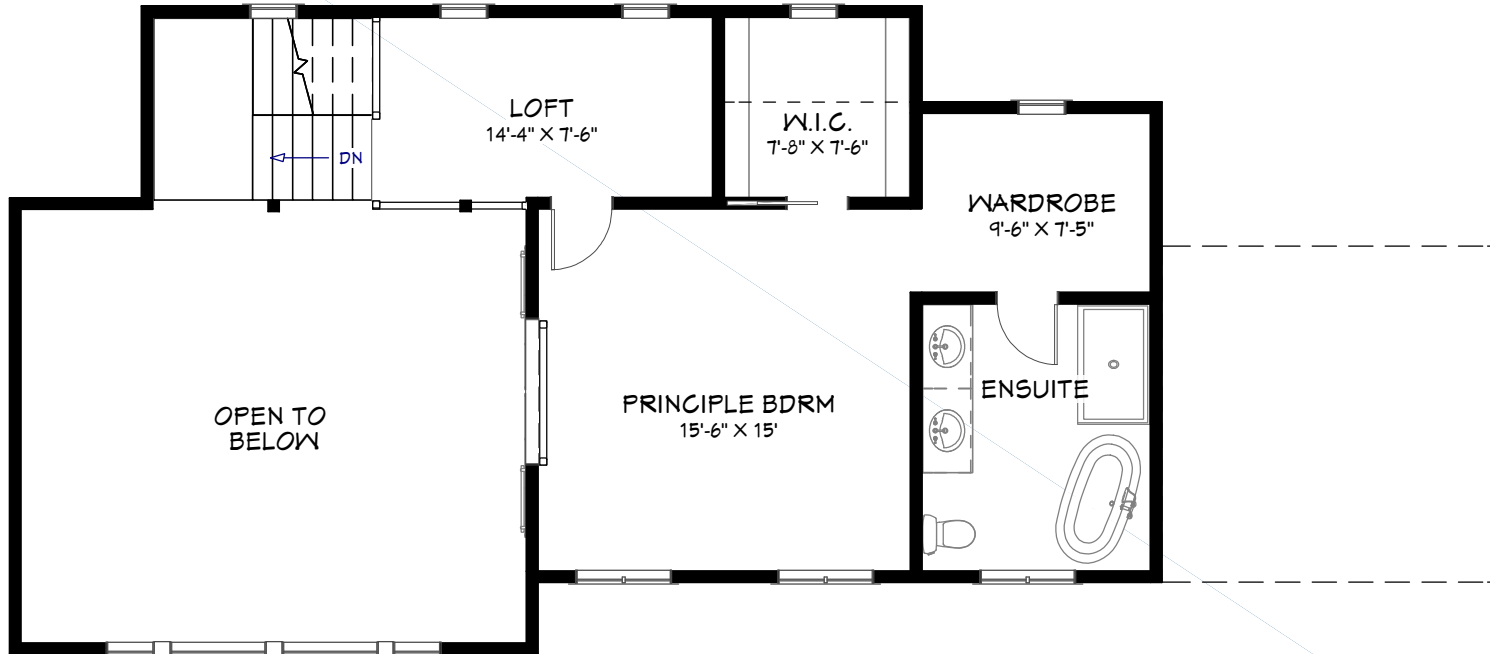
DIMENSIONS

Width: 62'
Depth: 30'

FALL 2024

SQUARE FOOTAGE

Basement: 1,005 sq.ft.
Main Floor: 1,134 sq.ft.
Upper Floor: 650 sq.ft.
Total Living Area: **2,789 sq.ft.**



UPPER FLOOR

Visit our website for more information
www.linwoodhomes.com



Designs, Images & Plans © Linwood Homes Ltd.