

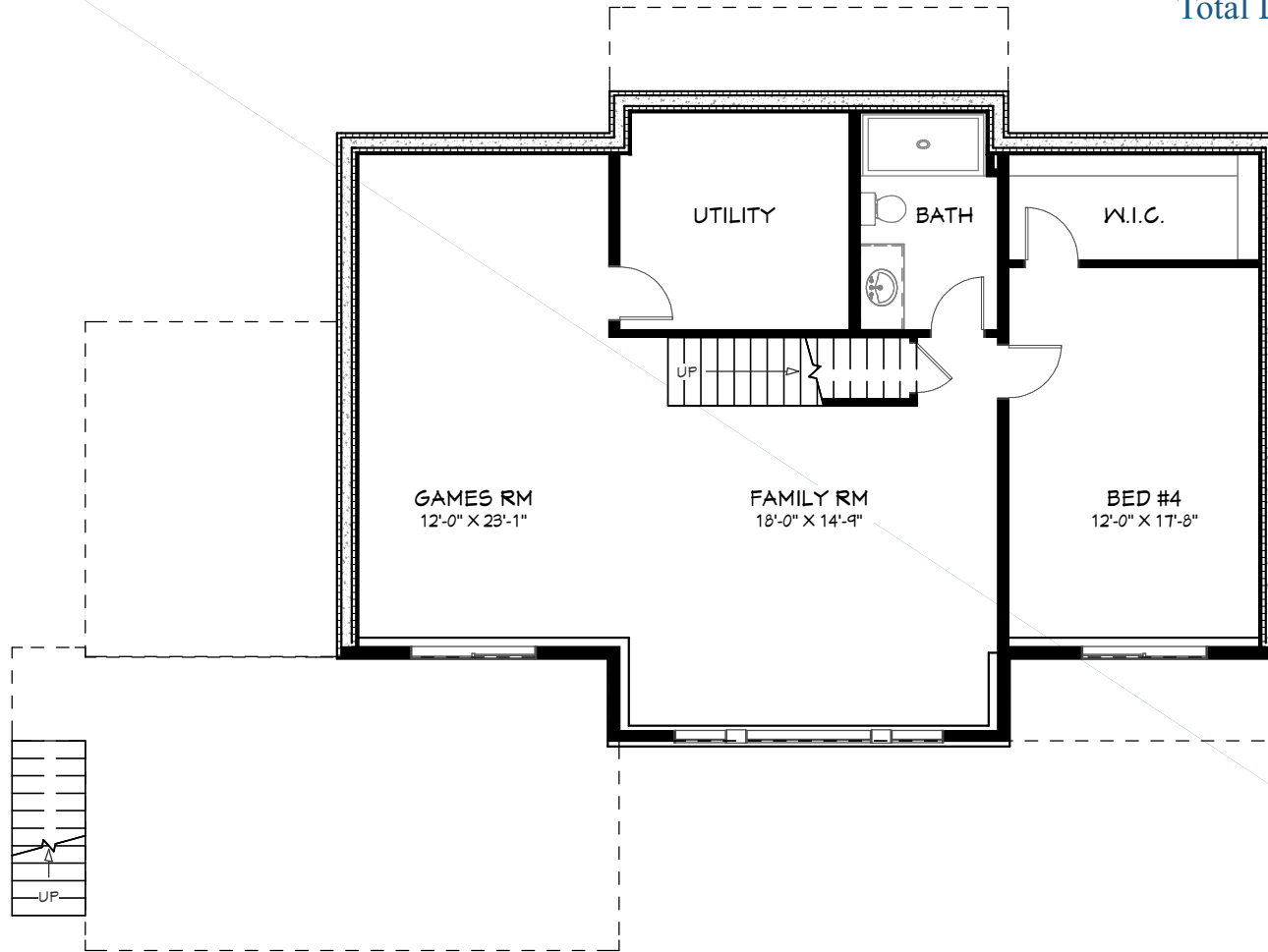
## DIMENSIONS

Width: 57'  
Depth: 45'

## SUMMER 2024

## SQUARE FOOTAGE

Walkout Basement: 1,113 sq.ft.  
Main Floor: 1,239 sq.ft.  
Upper Floor: 901 sq.ft.  
Total Living Area: **3,253 sq.ft.**



## BASEMENT

Visit our website for more information  
[www.linwoodhomes.com](http://www.linwoodhomes.com)



Designs, Images & Plans © Linwood Homes Ltd.

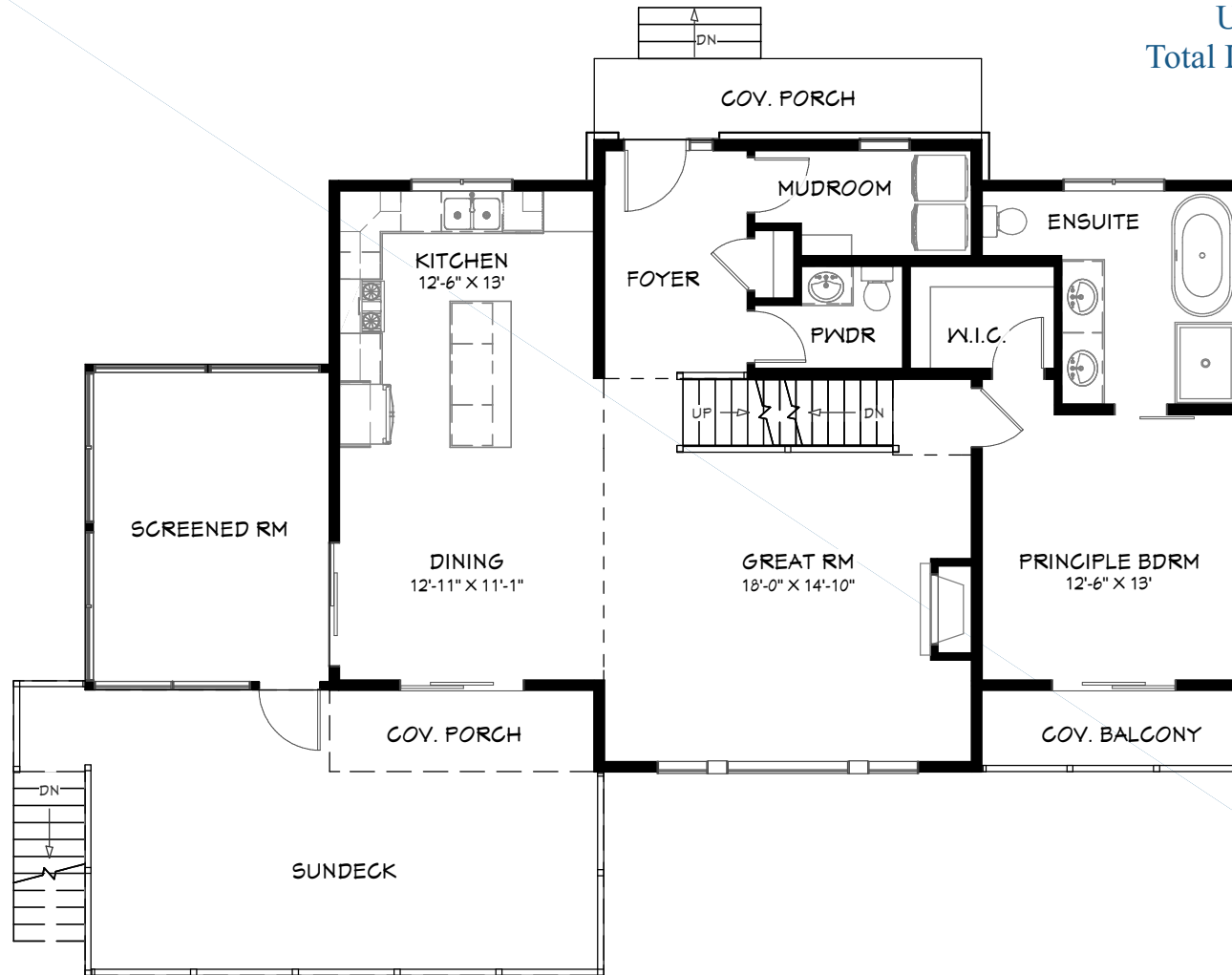
## DIMENSIONS

Width: 57'  
Depth: 45'

## SUMMER 2024

## SQUARE FOOTAGE

Walkout Basement: 1,113 sq.ft.  
Main Floor: 1,239 sq.ft.  
Upper Floor: 901 sq.ft.  
Total Living Area: **3,253 sq.ft.**



## MAIN FLOOR

Visit our website for more information  
[www.linwoodhomes.com](http://www.linwoodhomes.com)



Designs, Images & Plans © Linwood Homes Ltd.

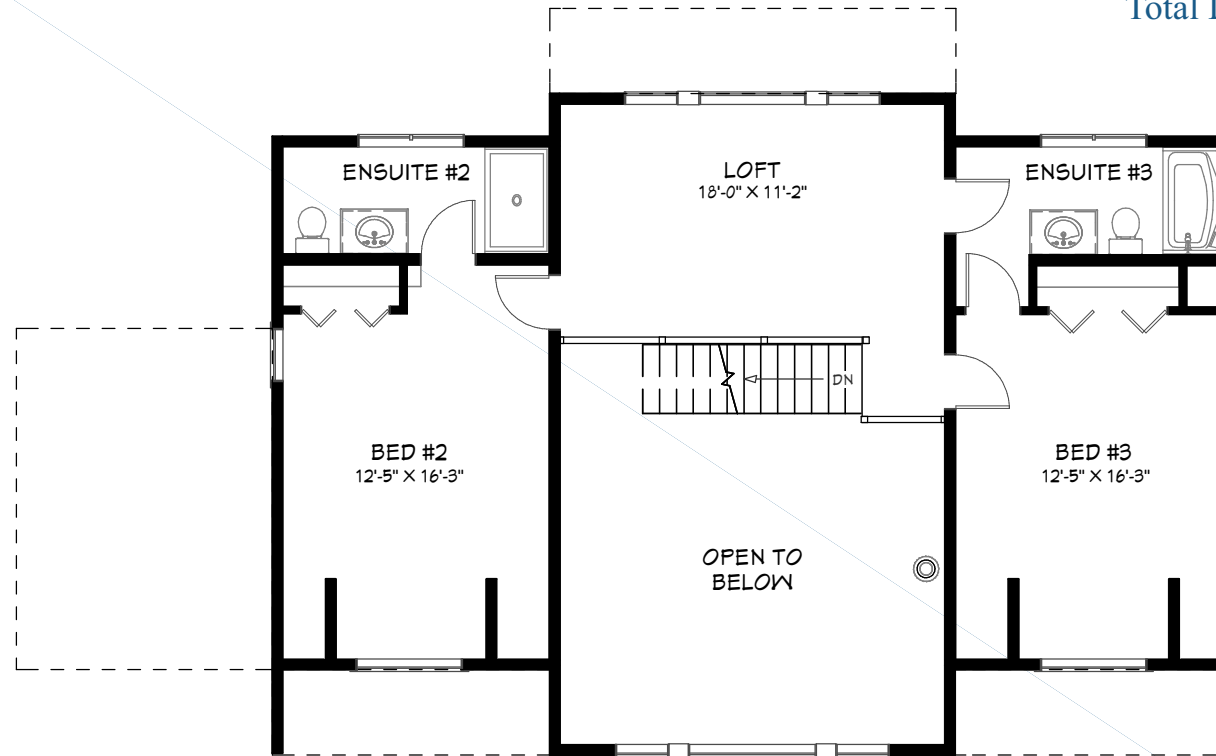
## DIMENSIONS

Width: 57'  
Depth: 45'

## SUMMER 2024

## SQUARE FOOTAGE

Walkout Basement: 1,113 sq.ft.  
Main Floor: 1,239 sq.ft.  
Upper Floor: 901 sq.ft.  
Total Living Area: **3,253 sq.ft.**



## UPPER FLOOR

Visit our website for more information  
[www.linwoodhomes.com](http://www.linwoodhomes.com)



Designs, Images & Plans © Linwood Homes Ltd.