

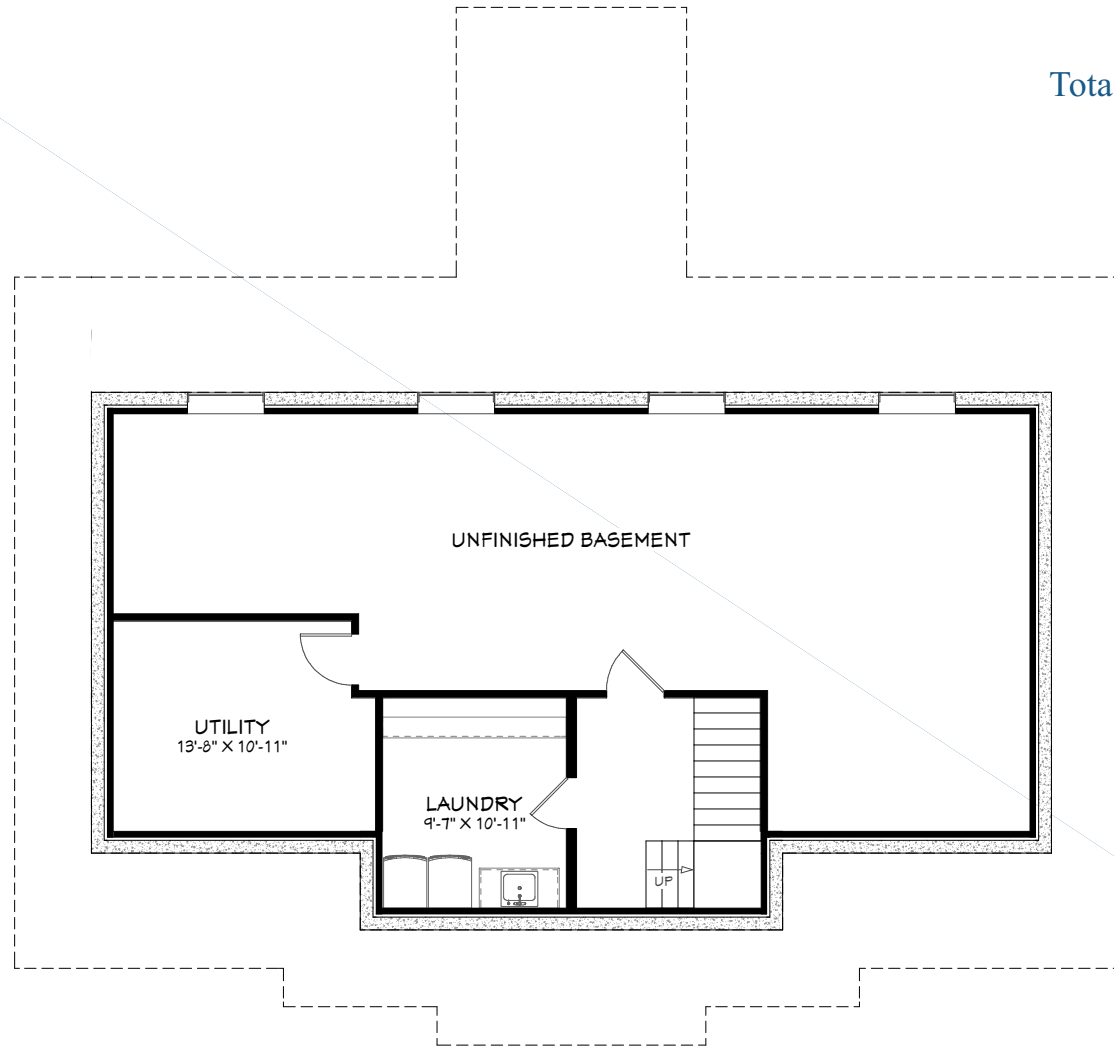
DIMENSIONS

Width: 58'
Depth: 54'

SUMMER 2024

SQUARE FOOTAGE

Basement: 261 sq.ft.
Main Floor: 1,288 sq.ft.
Upper Floor: 967 sq.ft.
Total Living Area: **2,516 sq.ft.**



BASEMENT

Visit our website for more information
www.linwoodhomes.com



Designs, Images & Plans © Linwood Homes Ltd.

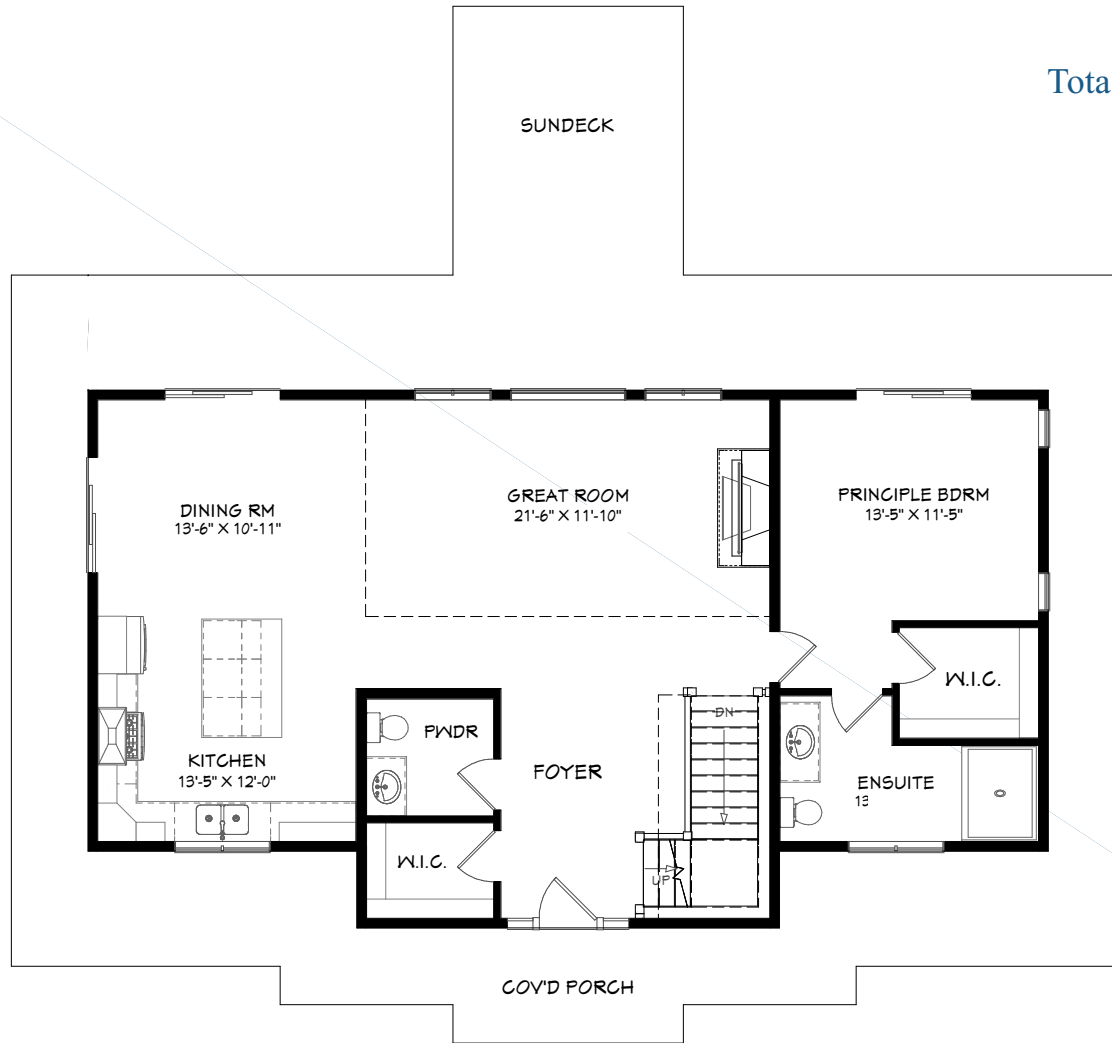
DIMENSIONS

Width: 58'
Depth: 54'

SUMMER 2024

SQUARE FOOTAGE

Basement: 261 sq.ft.
Main Floor: 1,288 sq.ft.
Upper Floor: 967 sq.ft.
Total Living Area: **2,516 sq.ft.**



MAIN FLOOR

Visit our website for more information
www.linwoodhomes.com



Designs, Images & Plans © Linwood Homes Ltd.

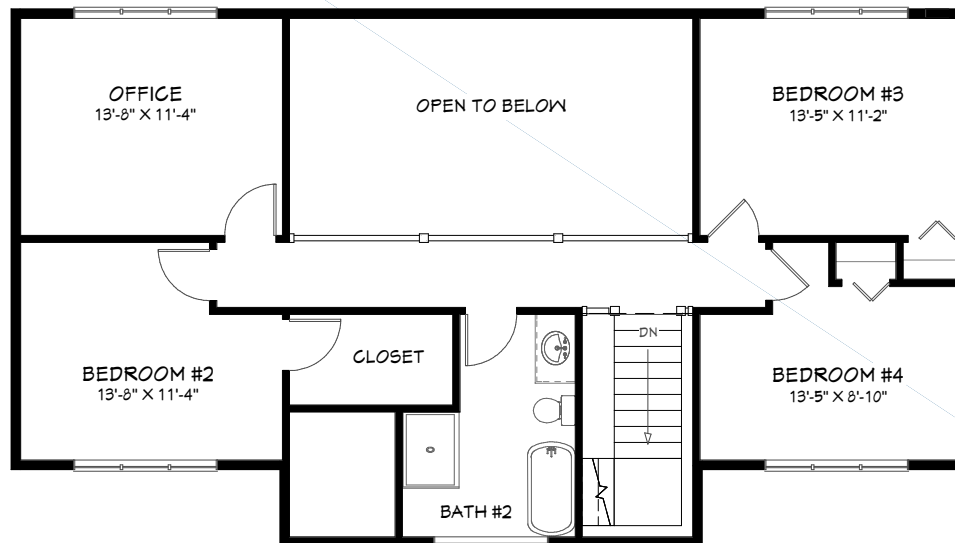
DIMENSIONS

Width: 58'
Depth: 54'

SUMMER 2024

SQUARE FOOTAGE

Basement: 261 sq.ft.
Main Floor: 1,288 sq.ft.
Upper Floor: 967 sq.ft.
Total Living Area: **2,516 sq.ft.**



UPPER FLOOR

Visit our website for more information
www.linwoodhomes.com



Designs, Images & Plans © Linwood Homes Ltd.